

After the Storm: Charleston Earthquake of 1886

Historical Background

“The Charleston earthquake of 1886 devastated the city of Charleston, already suffering from economic decline, urban blight and a category 3 hurricane that damaged 90% of the homes in the city the previous year. Measuring 6.6 on the Richter scale, it was the largest earthquake in the United States to that time and was felt by two-thirds of all Americans. The initial earthquake was felt as far away as Toronto and Cuba with strong aftershocks experienced for days and lesser ones for months. Because of building construction that relied on masonry rather than wood frames, which would move better with the earth, over 2,000 buildings were destroyed, accounting for ¼ of the assets of the city and 5 to 6 million dollars in property damage [\$100.5-121.2 million in 2006 dollars]. Racism prevented an accurate count of the number of people who were killed. Some estimates place the number as high as 500. Without state and federal assistance, the people of Charleston effected the most rapid, humane and financially responsible recovery from the destruction of a large scale disaster in American history up to that time. Charlestonians were back to work repairing their city in a week and had rebuilt the city in 14 months. Outpourings of sympathy and assistance came from all over a country that had recently been divided by the Civil War, despite South Carolina’s leadership in it. Additionally, much of what is generally now known about earthquakes was a result of the scientific study of the Charleston quake. As a result of the area’s hard work, the people of Charleston won the respect and admiration of much of the rest of the country and the city was again seen as one that should be visited.”

South Carolina Social Studies Support Document, Grade 8, 2008 http://ed.sc.gov/agency/Standards-and-Learning/Academic-Standards/old/cso/social_studies/social.html

South Carolina Standards

8-5.5 Summarize the human, agricultural, and economic costs of natural disasters and wars that occurred in South Carolina or involved South Carolinians in the late nineteenth century, including the Charleston earthquake of 1886, the hurricane of 1893, and the Spanish American War.

Objectives

- Students will assess the damage done by the earthquake of 1886 by analyzing pictures from the Earthquake Collection <http://www.sc.edu/library/digital/collections/quake.html>
- Students will use information inferred from images to create a specific plan of action for a farmer living in Charleston in 1886 after the Earthquake

Time Required

1 class period

Recommended Grade Level

Middle/High

Lesson Materials

- The 1886 Charleston Earthquake Collection
- Contentdm PowerPoint Instructions

Lesson Preparation

1. Visit the 1886 Charleston Earthquake Collection via USC's Digital Collection Library <http://www.sc.edu/library/digital/collections/quake.html>
2. Navigate the site to become more familiar. Clicking on each photograph will take you to the Collection home where you can save to "My Favorites" and create a PowerPoint presentation.
3. Open the Contentdm PowerPoint instructions handout. Use these instructions to create a PowerPoint presentation of some of the photographs from the Earthquake Collection in advance of this lesson.
4. Develop a list of information that is important for students to understand about the damage to farms and livelihood caused by the 1886 Charleston Earthquake. (Refer to the background passage above)

Lesson Procedure

1. Explain to students that there were many causes for the decline of farming in South Carolina. One cause was the 1886 Charleston Earthquake. Explain to students that they will be using photograph analysis skills to assess the damage caused by the Earthquake. After their assessment, students will write out a plan of action for a farmer living in Charleston after the earthquake.
2. As the teacher displays each image, she/he helps students observe, reflect and make inferences about each.
3. After the photo analysis phase, students should be instructed to assess (summarize) the damage to Charleston farm life by answering the following questions:
 - a. Where would a farmer stand financially after such a disaster?
 - b. What options would a farmer have after such a disaster?
 - c. If a farmer decided to restore his farm, how difficult would it have been?
 - d. Given what you know about history, what industry might be the next best investment for a farmer who decided to find a different career after the earthquake? (This question may be used for students who may have advanced knowledge of the time period.)
4. Add information from your own presentation to help students understand the impact of the earthquake just twenty-one years after the end of the Civil War. Emphasize how devastating it would be to undergo a major war, natural disaster and changing social climate.
5. Ask students: What would you do if you were a farmer after the 1886 Charleston Earthquake? Direct students to create a plan of action for a farmer living in Charleston after the earthquake.
6. Allow students to share their plan of action either with the entire class or with a partner.

After the Storm: Charleston Earthquake of 1886

Assessment

Have students create a newspaper headline that may have been written for the topic we are studying and to capture the main idea of the event.

Lesson Extension Options

- Have students illustrate their headline
- Have students research to find newspapers articles of the time that help explain how people reacted.

Digital Collections Information

This lesson plan is based on images and/or documents derived from the Charleston Earthquake, 1886 collection available from the University of South Carolina's Digital Collections Library.

To see more from this collection please visit the following link.

<http://www.sc.edu/library/digital/collections/quake.html>

To see other collections that may be helpful to your search, visit the Digital Collections homepage by clicking here <http://sc.edu/library/digital/index.php> or visit SCDL's collections by clicking here <http://www.scmemory.org/index.php> .

Using Contentdm to Create PowerPoint

If your computer is not yet running the .NET Framework version 2.0 or later, you will need to install it before installing the plug-in.

To install the PowerPoint Plug-in:

1. Close Microsoft PowerPoint, if it is open.
2. Download the executable file onto your computer from here:
<http://digital.tcl.sc.edu/cdm4/cdmppt/Cdmppt2009Setup.msi>
3. Double-click the executable file to install CONTENTdm PowerPoint Plug-in 2009.
4. Follow the installation directions.

Note: If you have a previous version of the CONTENTdm PowerPoint Plug-in installed on your computer, we recommend that you uninstall it using the Windows Control Panel Add or Remove Programs before installing the CONTENTdm PowerPoint Plug-in 2009. However, removing the previous version is not required.

Importing Items from My Favorites

To import My Favorites into PowerPoint, you must first create a collection of Favorites.

Note: To save a selected CONTENTdm item to My Favorites, your Web browser privacy settings must allow cookies, and you must use Microsoft Internet Explorer 6.0 or later, or Firefox 2.0 or later to save My Favorites.

To add an item to My Favorites in CONTENTdm:

1. Search or browse a CONTENTdm collection. When you open an item to view it, links to add items to My Favorites appear in the upper- and lower-left corners of the display pages.



Figure 12: This example shows **Add to Favorites** in the lower left corner.

2. Click **Add to Favorites**. The image and its metadata are added to My Favorites.
3. When viewing documents, add whole documents by clicking **Add Document to Favorites** or add single pages by clicking **Add Page to Favorites**.



Figure 13: The whole-document and single-page My Favorites options appear in the upper-left corner.

4. Click **Back to Results** to return to browsing or searching for more items to add.

To add multiple items to My Favorites:

1. From the browse or search-results view, place a check in the boxes to the left of the desired items or click **Select All**. The **Select All** link is in the upper- and lower-left corners of the display page.

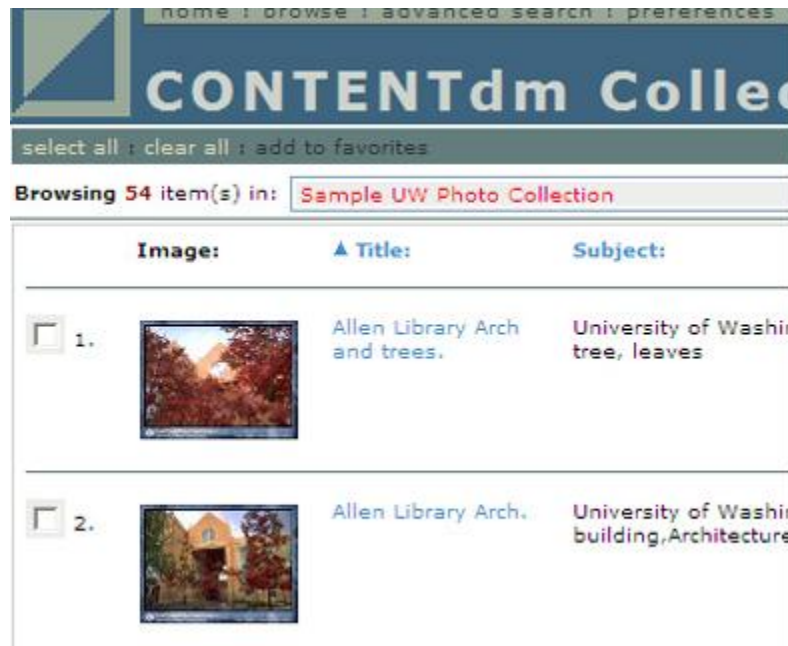


Figure 14: This example shows **Select All** in the upper-left corner.

2. Click **Add to Favorites**.

Note: Only items on the current Web page can be added to My Favorites. In other words, you cannot select items on one results page, and then move to another page to select

Getting Started

After you have installed the PowerPoint Plug-in and saved images to My Favorites, you are ready to create your presentation. This section covers opening the plug-in, selecting a Web site, and importing My Favorites.

Opening the PowerPoint Plug-in

To open the CONTENTdm PowerPoint Plug-in:

1. Start Microsoft PowerPoint, and then open an existing or new PowerPoint presentation.
2. Open the CONTENTdm PowerPoint Plug-in by clicking the **CONTENTdm** button on the PowerPoint toolbar, usually located in the upper-left corner, under other toolbars.

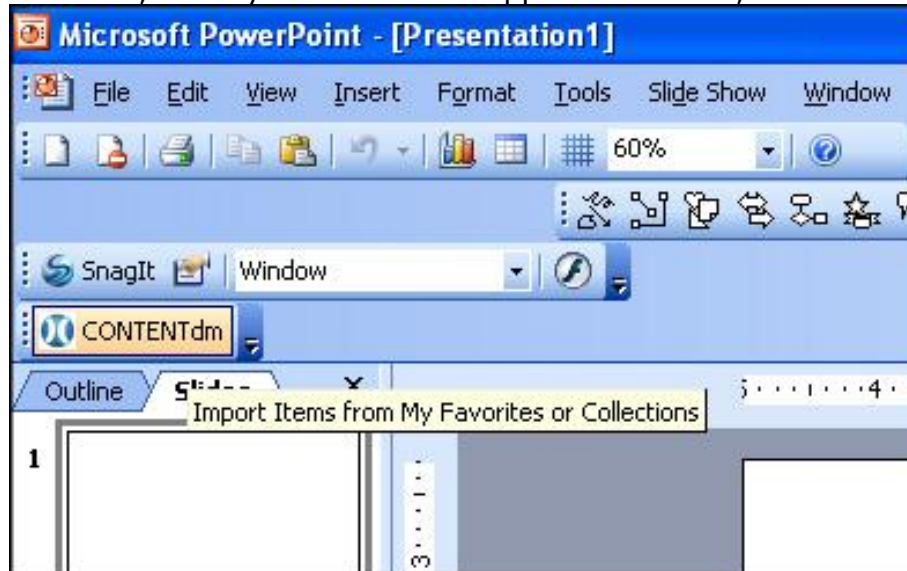


Figure 1: The CONTENTdm PowerPoint Plug-in button usually appears in the upper-left of the screen.

3. The CONTENTdm PowerPoint Plug-in **Welcome** screen displays. Click **Next** to continue.

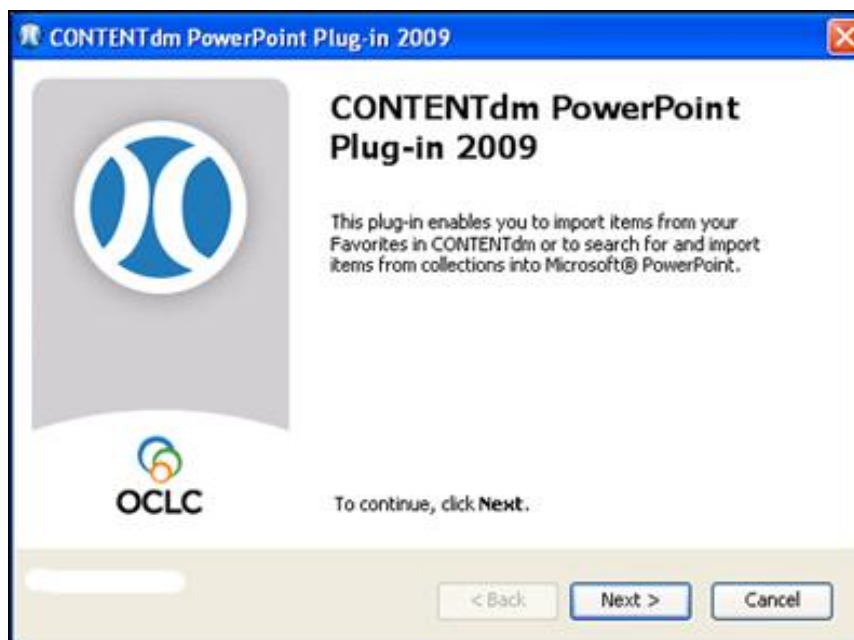


Figure 2: The **Welcome** screen.

Selecting a Web Site

After advancing from the **Welcome** screen, you can specify a CONTENTdm Web site address.

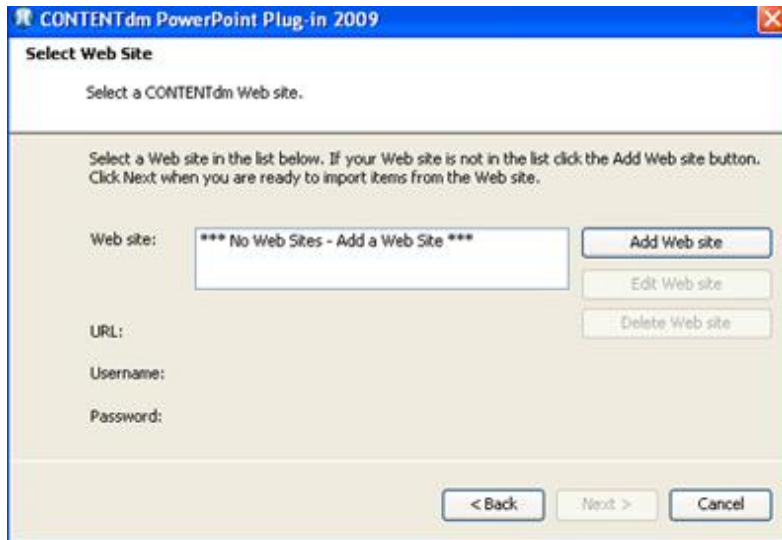


Figure 3: Selecting the CONTENTdm Web site.

To select a Web site:

Select a site from the list box and then click **Next**.

To add a Web site:

1. Click **Add Web Site**. The Web Site Settings dialog displays.

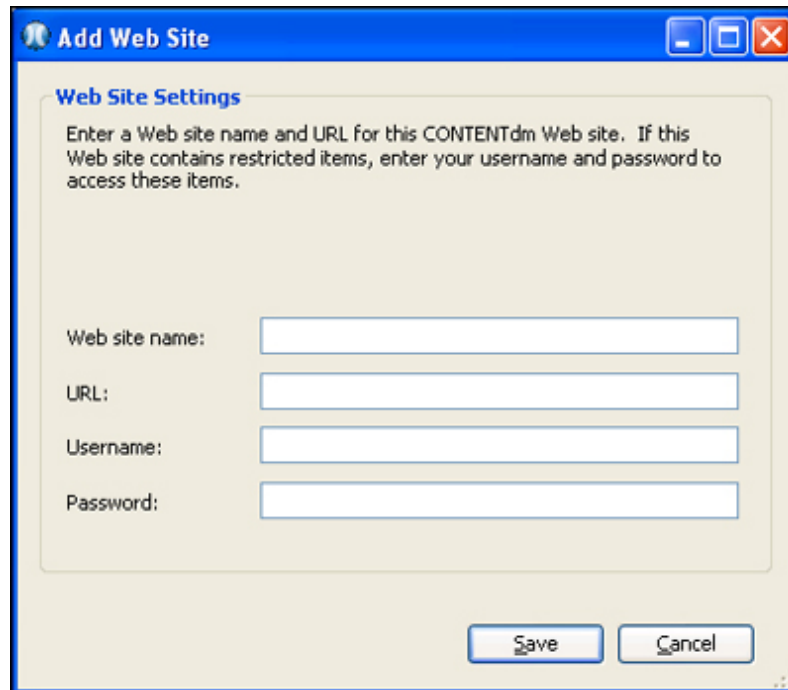


Figure 4: Adding a Web site.

2. Enter a name the site. This is just for your reference. It could be something like USC Digital Collections.
3. Enter the URL , <http://digital.tcl.sc.edu>, for the USC Digital Collections web site.
4. Click **Save** to close the dialog and save the Web site. The Select Web site screen displays, with the site that you added available to select.

Importing Items

After you have selected the CONTENTdm Web site address, you are ready to select your import method and then begin finding and importing items.

To select your import method:

1. From the **Select Import Method** screen, select **Import My Favorites**.
2. Click **Next** to continue.



Figure 7: **Select Import Method** screen.

1. After you have selected **Import My Favorites** on the **Select Import Method** screen, your Favorites are downloaded to the plug-in and displayed on the **Choose Items from My Favorites** screen.

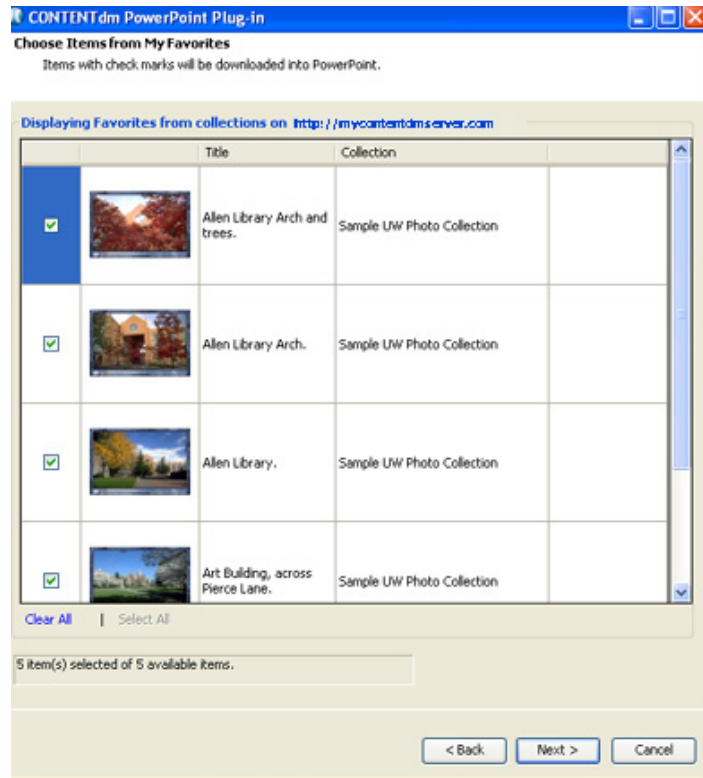


Figure 15: Favorites are displayed for selection.

2. All results are selected by default. Deselect any items you do not want to download to PowerPoint.

Note: Your Favorites may include restricted items or compound objects. For more information about working with those types of items, see the previous section.

3. Click **Next** to select your slide layout and metadata.

After you have selected the items you want to download into your presentation, choose your slide layout and specify which metadata to include.

Selecting Slide Layout

On the **Select Layout** screen, first choose the number of images to include on each slide. (Images are automatically sized smaller when you choose to include more than one on each slide.) Then specify the metadata you want to include for each item.



Figure 16: Images are automatically sized smaller when layout is defined as more than one image per slide.

1. On the **Select Layout** screen, click **Download** to download your selected items and associated metadata to PowerPoint.

Note: Depending on the number and types of items you selected, downloading may take a few minutes. The **Downloading Options** screen displays a progress bar (you can stop downloading by clicking **Cancel**).

2. The **Item Download Complete** screen confirms the number of items downloaded.



Figure 18: The number of items downloaded successfully is displayed.

3. Click **Finish** on the **Item Download Complete** screen to close the plug-in and review your presentation.

© 2009 OCLC